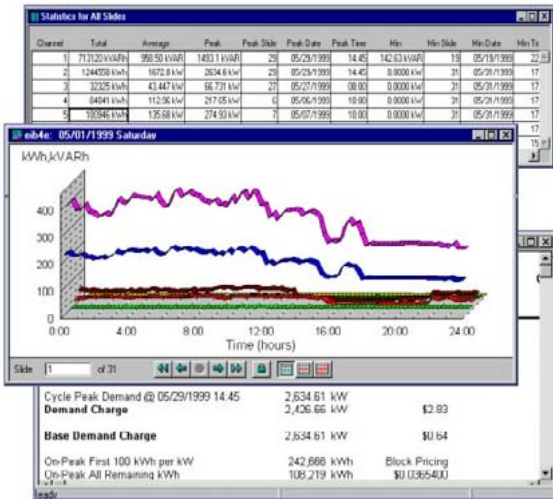


Energy Information Software



- View load profile information in intuitive charts and graphs
- Compare estimated bills based on actual customer usage data and pricing
- Create and manage a database of thousands of rates and prices
- Generate a variety of energy usage statistics and management reports
- Analyze "what-if" scenarios with immediate graphical and tabular results

Energy Information Software

Energy Profiler is an intuitive Windows®-based tool for the analysis of energy usage and pricing. It is used extensively by load researchers, pricing analysts, utility account managers, major energy customers, and energy services consultants. Energy Profiler is your "Swiss Army Knife" for energy usage and pricing analysis.

Key Account Management

Your customers have more choice in today's competitive energy market than ever before. If you don't help them understand and benefit from those choices, your competitors will.

Energy Profiler is the choice of Account Managers who win and retain customers through superior service. It offers the best energy deal by demonstrating how changes to a customer's rate structure, and/or energy usage pattern will affect their bill.

Any electricity supplier can claim to have the best deal – but Energy Profiler will prove it for you. The Bill Estimation module can generate bill estimates using a customer's real usage data or billing determinants from various scenarios. Within seconds you can present a selection of deals to a customer, and show the true cost of each offer.

Revenue Comparisons

Energy Profiler provides detailed revenue comparisons of shifting rate schedules, changing suppliers, moving peak usage into off-peak periods, aggregating accounts, or any combination of these for any rate schedule.

Energy Profiler's built-in Rate Wizard™ guides you through step-by-step development and entry of even the most complex rate schedules. There is no programming required, or any need to learn "rate description language."

Energy rates, demand rates, real-time rates, time-of-use rates, time-of-use demand rates, customer charges, ratchets, riders, and ramps all present customers with a bewildering array of choices. Working with their own usage data, Energy Profiler lets your customers make the right choice, every time.

Easy Load Research and Rate Design

Energy Profiler can streamline the many processes associated with load research and rate design. Users can aggregate loads, create hypothetical profiles based on functions, establish on-peak periods, and perform myriad other tasks. Energy Profiler can also facilitate the many elements of Real-Time Pricing (RTP) programs.

A Real-Time Pricing program has several linked elements. Energy Profiler is the only system that consistently handles all of these elements, and does so through an integrated, intuitive interface.

Rate Design - Energy Profiler helps design a rate that's attractive to customers and profitable for you. You can compare customer-specific billing determinants and/or interval load data against hourly marginal cost components, including generation, transmission (at the area level), and any other cost categories. Design RTP rates for a customer's total requirements, or interact with existing rates, having incremental increases in energy usage being eligible for the RTP rate.

Customer Choice - Having the relevant facts about planned usage patterns and upcoming prices helps customers make informed decisions about their own energy-using processes. Customers can opt to add an extra shift, start an extra production line, or defer certain operations until rates are lower.

Billing Determinants - Using raw meter data, Energy Profiler's Rate Calculation Engine (RCE) computes billing determinants and dollar amounts for even the most complex RTP rates, and incorporates them into your billing system.

A Useful Tool for Major Energy Customers

Customers employ Energy Profiler to better understand their energy usage, and manage their energy costs. It is supplied to commercial, industrial, and institutional organizations through our network of authorized dealers. Ask your energy provider if they offer Energy Profiler.

Energy Profiler lets major energy customers:

- Identify anomalies in energy usage
- Improve operational efficiency
- Reduce energy costs
- Make wise purchase decisions
- Benefit from Real-Time Pricing programs
- Understand energy usage

Energy Profiler presents data in highly intuitive charts and graphs to provide a clear picture of your company's energy usage. Graphically manipulate load profiles to see usage change under different conditions, define on-peak and off-peak periods, or display data overlays such as weather conditions.

Energy Profiler shows how your bill would alter if you move some demand to an off-peak period, reduce peak demand by a percentage, or make other operational changes.



Worldwide Headquarters
Tel: 1-250-652-7100
Fax: 1-250-652-0411
email: sales@pwrn.com

Toll free 1-866-466-7627
1-866-ION-SMART

www.pwrn.com

Energy Profiler is a trademark of
Power Measurement
All other trademarks are the property
of their respective owners.

Information contained herein is
subject to change without notice.
Revision Date: May 2004
'2004 Power Measurement
Printed in Canada
70200-0173